

Guidance for Show Exhibitors and Show Operators' Responsibilities

April 2024

The dates of Shows in this guidance are provisional. Please contact the Show organisers for updates on dates and procedures for attendance.

For dates and email addresses of the 2024 Agricultural Shows see Northern Ireland Shows Association Facebook Page at <https://www.facebook.com/Northern-Ireland-Shows-Association-NISA-567681683364300/>

Contents

Section	Contents	Page
1	Guidance for Cattle Exhibitors and Show Operators	4
	Procedure for Movement of Northern Ireland (NI) Cattle into and out of Local Agricultural Shows	6
	Procedure for Movement of Cattle from the Republic of Ireland (ROI) into and out of Shows	7
2.	Guidance for Sheep Exhibitors and Show Operators	8
	Procedure for Movement of Northern Ireland Sheep into and out of Shows	8
	Procedure for Movement of Sheep from the Republic of Ireland (ROI) into and out of Shows	10
3.	Guidance for Goat Exhibitors and Show Operators	11
	Procedure for Movement of Northern Ireland Goats into and out of Shows	11
	Procedure for Movement of Goats from the Republic of Ireland (ROI) into and out of Shows	12
4.	Guidance for Pig Exhibitors and Show Operators	13
	Procedure for Movement of Pigs into and out of Shows	13
5.	Guidance for Poultry Exhibitors and Show Operators	15
6.	Guidance for Camelid Exhibitors and Show Operators	15
7.	Biosecurity	16
8.	Animal Transport Rules	17
9.	Key Points	19
10	Summary of Show Operators' Responsibilities	20
11	Summary of Exhibitors' Responsibilities	20

Annex A	Procedure for Cattle movements to and from a Show	21
Annex B	Procedure for Sheep and Goat movements to a Show	22
Annex C	Procedure for Sheep and Goat movements from a Show	23
Annex D	Procedure for Pig movements to a Show	24
Annex E	Procedure for Pig movements from a Show	25
Annex F	Show Dates 2024	26

1. Guidance for Cattle Exhibitors and Show Operators

Procedure for Movement of Northern Ireland (NI) Cattle into and out of Local Agricultural Shows

1.1 Disease Control

Only animals free from disease restrictions, including Tuberculosis, Brucellosis, Bluetongue and Bovine Viral Diarrhoea (herd or individual animal restrictions) may be permitted to move to a Show.

Bovine Tuberculosis Controls

To minimise the risk to other livestock, exhibitors are encouraged to have “Show” animals tested for Tuberculosis by their Private Veterinary Practitioner in the 30 days beforehand.

To minimise the risk to their own herd, exhibitors are encouraged to quarantine show animals and have them tested for Tuberculosis by their Private Veterinary Practitioner at least 42 days after their last appearance at a Show and before re-integration to the main herd.

Bovine Brucellosis Controls

Pre-movement testing for Bovine Brucellosis is no longer required for movement to shows.

The Compulsory Bovine Viral Diarrhoea Scheme (BVD).

Shows should put in place adequate biosecurity measures to reduce the risk of transmission on the premises. Best practice is that all cattle are from herds where every animal has been BVD tested with a negative result and there have been no BVD positive animals in the past 12 months. As a minimum, the following paragraphs must be met:

- For cattle born on/after 01/03/2016, only those animals with BVDN status on NIFAIS (negative BVD test result) can be moved into a “Show” herd. NIFAIS will block the movement of animals which don’t have BVDN status.
- For cattle born before 01/03/2016, animals with a NIFAIS status of BVDP (positive), BVDP (inconclusive), DAMPI (dam of a positive animal) or OFFPI (offspring of a positive animal) cannot be moved into a “Show” herd. NIFAIS will block the movement of animals which have any of these statuses.
- For imported animals born on or after 1st March 2016 and resident in a NI herd, a BVDN status is required before the animal can be moved into a Show herd. Statuses can only be obtained where samples have been tested in laboratories approved under the NI scheme. AHWNI can attempt to obtain BVD statuses for animals that have been imported from the ROI, so owners of any such animals should contact AHWNI, allowing time for a test to be carried out should a BVD Negative result not be available.
- Imported animals, not resident in a NI herd and moving directly to a Show, should be tested with virus negative results or should be the dam of a virus-negative calf. Show

Operators may ask for evidence of the relevant virus-negative test result or proof that the animal concerned is the dam of a virus-negative calf.

Proof of BVD Negative status

Farmers can access the AHWNI database (www.animalhealthni.com), using their government gateway ID and password, for BVD test results and to print certificates of BVD negative test results. BVD statuses are also available on NIFAIS online and on NIFAIS herd lists.

In summary, only those animals with a BVD status of BVDN (negative) INDNEG (indirect negative) or 'blank' (no BVD status on NIFAIS) can move into the Show Herd. Any animal with an NIFAIS status of BVDP, BVDI, DAMPI, OFFPI or BVDU (unknown) status cannot be moved into the "Show" herd.

In respect of imported animals born on or after 1/3/2016, if a result from an approved laboratory has not already been provided by the vendor, the Bovine Viral Diarrhoea Scheme Order (Northern Ireland) 2016 requires a valid BVD test to be completed within 20 days of the date of importation.

Show Secretaries are strongly advised to ask exhibitors to provide evidence of the BVD status of animals before entry, by providing a copy of the animal statuses taken from a recent NIFAIS herd-list, or an AHWNI certificate. (This will avoid a repeat of two incidents in 2023 where non-negative animals attended Shows, which presented an avoidable disease risk to other exhibitor's cattle.)

All queries relating to details of the compulsory BVD scheme should be directed to AHWNI:

Unit 49
Dungannon Enterprise Centre
2 Coalisland Rd
Dungannon
Co. Tyrone
BT71 6JT Phone: 028 7963 9333 Email: info@animalhealthni.com
Web Site: <http://www.animalhealthni.com/>

BVD Requirements for Shows wishing to include exhibitors from Ireland

Ireland now has a European Commission approved BVD Eradication Programme. This increases the BVD requirements for the movement of cattle into Ireland. If a Show in NI plans to include exhibitors from Ireland and plans to return these animals to their herds of origin via a non-co-minglement certificate, then the show will need to have additional BVD requirements for **all** exhibitors in place – including cattle from NI herds. Show organisers are advised to contact daeratradeexports@daera-ni.gov.uk well in advance of any planned Show to discuss these additional arrangements. Show organisers must ensure that NI exhibitors are aware of any additional BVD requirements.

1.2 Identification and Movement

All cattle must be properly identified and comply with the Cattle Identification Regulations.

General Principles

- Cattle going to a Show must be included on an electronic movement document with the “Show” as the destination herd or be accompanied by a fully completed MC2 document with the “To” premises completed with the “Show” name and address and Animal Group Number.
- Cattle moving from a Show must return to the herd they came from.
- Cattle from the ROI may only attend Show premises in NI that are operating as EU Approved Assembly Centres for the relevant species on that day.

The number of Shows to which cattle may travel is not limited provided these conditions are met on all occasions.

Cattle Movements to and from a Show for Keepers registered in Northern Ireland

On arrival at the Show, the cattle must be accompanied by a print-out of an electronic movement document created by the herd keeper on NIFAIS-on-Line (NOL) or a fully completed paper MC2 document.

Presenter's Responsibilities

1. Presenter completes either an electronic intention to move on NOL choosing the specific “Show” as the destination or a paper MC2 showing the destination as the “Show” premises. To facilitate checks at the Show the electronic movement document should be printed.
2. For those using paper documents the presenter brings the **White, Yellow, and Pink** copies of the MC2 to the Show. Presenter keeps the **Blue** copy.
 - All 3 copies will be checked by a Show Representative and stamped with the Show stamp.
 - The MC2C (pink) will be retained by the Show Operative.
3. For returning animals home from the Show, the Show Operative will produce a seller confirmed e-document returning the animal(s) to the presenting Herd.
4. Keepers registered to use NOL do not require any further documentation for the journey home but must confirm the move home on NOL within 7 days.

5. Keepers not registered to use NOL should receive a printed copy of the return Movement document from the Show Operative.
6. Keepers not registered to use NOL must confirm the move home by attaching one of their confirmation stickers and returning the movement document to their DAERA Direct office to arrive within 7 days of the move home or they can confirm the move home within 7 days using the Cattle Registration Line at 0300 200 7855.

Show Operator's Responsibilities.

1. Check that the cattle on the MC2/eDocument match those presented in terms of description and ear tag numbers.
2. On NOL confirm the animals (both those presented with a paper MC2 and those with an electronic Movement Document) into the Show Animal Group Number.
3. Apply the Show stamp to all the copies of the MC2 paper documents and:
 - Keep Pink (MC2B) copy of MC2 for Show's own records.
 - Return White and Yellow copy of incoming MC2s to local DDO by the next working day after the end of the Show.
4. At the end of the Show electronic "intentions to move" should be created for all cattle moving them back to their herds of origin. (N.B. animals should always be returned to the herds from which they moved to the show.
5. For keepers registered to use NOL no documentation needs to be supplied to the keeper.
6. For keepers not registered to use NOL 2 copies of the electronic movement document should be printed to enable the presenters to confirm the animals back into their herd and retain one for their own records.

Movements to and from a Show for Cattle Keepers registered in the Republic of Ireland (ROI).

Note - In order to receive cattle from the ROI, the "Relevant part of the Show premises" must be operating to **full EU Assembly Centre Standards** for cattle and be approved for this purpose.

Advice on and approval of this must be sought from the local Divisional Veterinary Office. As part of these requirements ROI cattle must be kept segregated from NI cattle and must be re-exported directly from the Show premises to their premises of origin in the ROI as soon as the Show ends.

A Show with ROI exhibitors must have additional BVD requirements/checks in place for all competitors, including those from NI.

Cattle imported directly to a Show from the ROI.

Note - animals must be registered on NIFAIS by DAERA staff before they can move into a Show. This registration process will be carried out by the local DAERA office on receipt of the Health certificate issued by a Department Vet in the ROI, passport and "Show" MC2 documents from the Show Organiser. The registration process will allow DAERA to produce the necessary paperwork for the move out of the Show. At present it is not possible for Show Organisers to electronically move imported animals into a Show.

Cattle entering a Show will be accompanied by a Passport and a Health Certificate issued by a Department Vet in the ROI.

The Show will be issued with its own MC2 self-written notification book.

The Show Operative will enter the animal(s) details onto the MC2 then send the completed MC2A (White) MC2B (Yellow) and MC2C (Pink) documents to the local DAERA Direct Office at the latest by the next working day.

MC2D (Blue) should be retained in MC2 book.

Cattle Re-exported Directly from a Show to the ROI.

Cattle being re-exported to ROI will need to be accompanied by:

- An MC2L (produced by the local DAERA Direct Office);
- The passport (which accompanied the animal to the Show);
- Their original Health Certification suitably endorsed by the Veterinarian responsible for the Show;
- A Non Co-minglement Certificate which will be issued by the Veterinarian responsible for the Show.

If the Show is on a Saturday, the Show operator must ensure that all documentation is with their local DAERA Direct Office on the following Monday morning. The MC2L will be produced retrospectively. This may also occur when documents are received by the DAERA Direct Office too late to be processed before the animals leave the Show.

2. Guidance for Sheep Exhibitors and Show Operators

Procedure for Movement of Northern Ireland Sheep into and out of Shows

Identification - For Moves to and from a Show

All sheep, irrespective of their date of birth, must be identified and comply with the Sheep and Goats Identification Regulations and be registered in the flock of the exhibitor.

All sheep must be identified correctly before arriving at the Show. Sheep arriving at the Show without the correct identification will be refused admittance.

Movement of Sheep to a (non CPR) Show - See Annex C

(A non CPR Show is one where the tag numbers are not being scanned and uploaded to NIFAIS)

- Sheep must be accompanied by a fully and accurately completed SG2 self-written movement document. The SG2 movement document authorises the movement of sheep or goats from the farm to Show premises.
- **The individual identification numbers must be recorded on the SG2 document (it is acceptable to attach a cross-referenced printed schedule listing the tag numbers to the SG2). These numbers must be checked by the Show Operators against the animals presented before the animals are allowed entry to the Show.**
- The SG2 movement documents must be stamped with the Show stamp. The white copy must be sent to the local DAERA Direct Office at the latest by the next working day.
- Show Operators must have books of movement documents (SG2s) for sheep and separate books for goats.

Movement of Sheep from a Show - See Annex D

- The yellow copy of the SG2 provided by the Show Operator must accompany the animals back from the Show. This must include details of the Show and receiving flock, the individual tag numbers (it is acceptable to attach a printed schedule listing the tag numbers to the SG2) or be cross referenced/stapled to the pink copy of the incoming SG2 (only if the whole batch moves out at the same time). **Section 3 of the outgoing SG2 must be signed by the flock keeper.**
- Both move in and move out white copies of the SG2 must be sent to the Show's local DAERA Direct Office by the Show Operator at the latest by the next working day.

Movement of Sheep to and from a Central Point of Recording (CPR) Show

- Sheep moving to a CPR Show must be accompanied by a fully and accurately completed SG2 self-written movement document, however, the individual tag numbers do not have to be recorded on the SG2.
- **The total number of sheep being moved into the Show must still be entered on the SG2.**
- The ear tag numbers will be read electronically on entry to the Show and a list of tag numbers will be given to the exhibitor.
- The exhibitor must complete and sign a declaration stating that the sheep will be returned to their flock of origin directly from the Show premises.
- The Show must send the declarations to the local DAERA Direct Office for the Show at the latest by the next working day.

- On departure from the Show the ear tag numbers will again be read electronically and the exhibitor will be issued with a C movement document. This C document must accompany the sheep back to their premises of origin.
- Both the tag list and the C document must be kept with the exhibitor's flock register.

Procedure for Movement of Sheep from the ROI into and out of Shows

Sheep must have two matching identifiers, one of which must carry an EID device.

Note - In order to receive sheep from the ROI, the "Relevant part of the Show premises" must be operating to **full EU Assembly Centre Standards** for sheep and be approved for this purpose.

Advice on and approval of this must be sought from the local Divisional Veterinary Office.

As part of these requirements ROI sheep must be kept segregated from NI sheep and must be re-exported directly from the Show premises to their premises of origin in the ROI as soon as the Show ends.

Note: The ROI may change their guidance within the next 12 months. Shows should check prior to their Show date to ensure all measures are satisfied.

Sheep Imported Directly Into a Show

Sheep entering a Show will be accompanied with a Health Certificate issued by a Department Vet in the ROI which must be copied to the local DAERA Direct Office responsible for the Show. An SG2 document must be completed for the move from the ROI to the Show (Show's own SG2 book).

Sheep Re-Exported Directly From a Show

Sheep being re-exported to the ROI will need to be accompanied by:

- Their original Health Certification suitably endorsed by the Veterinarian responsible for the Show.
- Non Co-Minglement Certificate which will be issued by the Veterinarian responsible for the Show.
- An SG2 document which must be completed for the move from the Show to the ROI (Show's own SG2 book).

3. Guidance for Goat Exhibitors and Show Operators

Procedure for Movement of Northern Ireland Goats into and out of Shows

Identification - For Moves to and from a Show

All goats, irrespective of their date of birth, must be identified and comply with the Sheep and Goats Identification Regulations.

All goats and kids must be identified correctly before arriving at the Show. Goats arriving at the Show without identification will be refused admittance.

Movement - Goats Going to a Show - See Annex C

- Movement of goats to Shows must be accompanied by a fully and accurately completed SG2 self-written movement document.
- The individual identification numbers must be recorded on the SG2 document (it is acceptable to attach a printed schedule listing the tag numbers to the SG2). These numbers should be checked by the Show Operators against the animals presented before the animals are allowed entry to the Show.
- The SG2 movement documents must be stamped with the Show stamp. The white copy must be sent to the local DAERA Direct Office at the latest by the next working day.
- Show Operators must have books of movement documents (SG2s) for goats and separate books for sheep.

Movement of Goats from a Show - See Annex D

- The yellow copy of the SG2 provided by the Show Operator must accompany the animals back from the Show. This must include details of the Show and receiving herd, the individual tag numbers (manually added or scanned list) or be cross referenced/stapled to the pink copy of the incoming SG2 (only if the whole batch moves out at the same time). Section 3 of the outgoing SG2 must be signed by the herd keeper.
- Both move in and move out white copies of the SG2 must be sent to the Show's local DAERA Direct Office by the Show Operator within 7 days.

Procedure for Movement of Goats from the ROI into and out of Shows

Goats must have two matching identifiers, one of which must carry an EID device.

Note - In order to receive goats from the ROI, the “Relevant part of the Show premises” must be operating to **full EU Assembly Centre Standards** for goats and be approved for this purpose.

Advice on and approval of this must be sought from the local Divisional Veterinary Office.

As part of these requirements ROI goats must be kept segregated from NI goats and must be re-exported directly from the Show premises to their premises of origin in the ROI as soon as the Show ends.

Goats Imported Directly into a Show

Goats entering a Show will be accompanied with a Health Certificate issued by a Department Vet in the ROI which must be copied to the local DAERA Direct Office responsible for the Show. An SG2 document must be completed for the move from the ROI to the Show (Show's own SG2 book).

Goats Re-Exported Directly from a Show

Goats being re-exported to the ROI will need to be accompanied by:

- Their original Health Certification suitably endorsed by the Veterinarian responsible for the Show.
- Non Co-Minglement Certificate which will be issued by the Veterinarian responsible for the Show.
- An SG2 document which must be completed for the move from the Show to the ROI (Show's own SG2 book).

Note: The ROI may change their guidance within the next 12 months. Shows should check prior to their Show date to ensure all measures are satisfied.

4. Guidance for Pig Exhibitors and Show Operators

Procedure for Movement of Pigs into and out of Shows

Disease status and testing requirement

- Only pigs from OADF status holdings are permitted to attend Shows.
- **Testing pigs for Aujeszky's Disease is no longer required for entry to Shows**
- A protocol has not been agreed between DAERA and ROI authorities so pigs from the ROI must not be allowed entry to the Show.

Identification requirements

- The Pigs (Records, Identification and Movement) Order (Northern Ireland) 2012 came into operation on 19th March 2012.
- Under this legislation **all** pigs, regardless of age or category, entering the Show must be clearly identified with an **ear tag** bearing the full identification (ID) mark – the holding **number** and a unique individual number of up to 4 digits. The holding number must be pre-printed on the ear tag. **Pigs must have ear tags applied correctly before arriving at the Show. Pigs arriving at the Show without ear tags will be refused admittance.**
- However, if a pig was born prior to 19th March 2012, was identified under the previous legislation, The Aujeszky's Disease Order (Northern Ireland) 1994, and that identification is still in place and clearly legible, then the pig does not have to be re-identified as above. The Aujeszky's Disease Order required an ear tag or tattoo with the holding number and in the case of a breeding pig an individual number of not more than 4 characters

Movement of Pigs to a Show - See Annex D

- The movement of pigs to Shows must be accompanied by a PM1 document fully and accurately completed and signed by the herd keeper.
- The original (yellow) PM1 and the first (white) copy must accompany the pigs to the Show.
- The full identification (ID) marks must be recorded on the PM1 document. It is acceptable to attach a schedule to the PM1 listing the identification marks. The schedule must be cross referenced to the serial number of the PM1. These numbers should be checked by the Show Operators against the ear tags in the animals presented before the animals are allowed entry to the Show.
- The PM1 movement document details the movement of pigs from the farm to a Show premises. The white copy of the PM1 must be sent to the local DAERA Direct

Office by the Show operator on the day of the movement, or where this is not possible on the next working day.

Movement of Pigs from a Show – See Annex E

- Show Operators must ensure that they have a sufficient number of books of movement documents (PM1s) for the movement of the pigs from the Show.
- The Show Operator must accurately complete and sign a PM1 and provide this (yellow original) to the herd keeper to accompany each batch of pigs moving from the Show.
- It is acceptable to attach a schedule to the PM1 listing the identification marks. The schedule must be cross referenced to the serial number of the PM1. The schedule may actually be a copy of the incoming PM1 document but only if the whole batch moves out at the same time.
- **The white copy of the PM1 must be sent to the Show's local DAERA Direct Office by the Show Operator on the day of the movement, or where this is not possible on the next working day.**

Show operator responsibilities

- Show operators are reminded that they are obliged to ensure that all pigs entered into a Show are correctly identified and are accompanied by the correct documentation both to and from the Show.
- Show operators must forward the white copies of the PM1 movement documents to the local DAERA Direct Office on the day of movement to which they relate, or where this is not possible on the next working day.

5. Guidance for Poultry Exhibitors and Show Operators

In view of the on-going issues with Avian Influenza (Bird Flu) in many countries, Show operators must comply with the conditions of the general licence for bird gatherings which is on the DAERA website at:

<https://www.daera-ni.gov.uk/publications/general-licence-bird-gatherings>

The species of poultry/birds involved will determine whether or not the holding of a Show will be permitted.

Show operators should also be aware of the biosecurity measures required for bird gatherings. Information is available on the DAERA website:

<https://www.daera-ni.gov.uk/publications/biosecurity-best-practice-bird-gatherings>

Where appropriate it is recommended that all entries in the poultry section are vaccinated against Newcastle disease.

6. Guidance for Camelid Exhibitors and Show Operators

To minimise the risk to other livestock, exhibitors are encouraged to have camelid “Show” animals tested for Tuberculosis by their Private Veterinary Practitioner in the 30 days beforehand.

To minimise the risk to their own herd, exhibitors are encouraged to quarantine camelid show animals and have them tested for Tuberculosis by their Private Veterinary Practitioner at least 42 days after their last appearance at a Show and before mixing with camelids or cattle.

A protocol has not been agreed between DAERA and ROI authorities so Camelids from the ROI must not be allowed entry to the Show.

7. Biosecurity

Gathering animals together from many farms in different areas of the country has the potential to spread animal disease. It is the responsibility of every exhibitor to reduce this risk to a minimum and thus to protect his/her own livestock and that of other farmers. No animal under DAERA restriction, or showing signs or symptoms of any disease, must be brought to a Show. Calves born on/after 01/03/2016 must have been tested negative for BVD.

- Vehicles used to transport any animals to the Show must be cleansed and disinfected before leaving your farm, with special attention being paid to the underside and wheel arches. Any equipment brought to the Show should also be cleansed and disinfected with a DAERA approved disinfectant. These are listed at:
<https://www.daera-ni.gov.uk/publications/approved-disinfectants>
- Clean protective clothing and footwear should be worn when handling animals.
- If bedding is to be used at the Show, it should be fresh and clean. Contaminated bedding should not be removed from the transport vehicle at the Show grounds.
- Contact between animals while at the Show should be kept to a minimum.
- Prior to leaving the Show grounds, or immediately on return home, protective clothing and footwear should be thoroughly cleansed and disinfected. Vehicles used to transport animals should be thoroughly cleansed and disinfected with special attention being paid to the underside and wheel arches.
- Any clinical signs of disease occurring in animals that have been at the Show, during the following two to three weeks, must be reported to the Show operators. Where a notifiable disease is suspected, your local DAERA Direct Office should also be notified.
- DAERA particularly encourages every exhibitor of in-calf cattle to assess carefully the risk of spreading disease before deciding to present them for showing. Exhibitors should ask themselves:
 1. Is my TB and Brucellosis testing up to date?
 2. Have the animals that I intend to exhibit a BVD status which allows movement into the Show herd? (Any animal with a NIFAIS status of BVDP, BVDI, DAMPI, OFFPI or BVDU status cannot be moved into the Show herd.)
 3. Is my pregnant animal within the window of susceptibility for BVD infection (i.e. between 30 and 120 days in-calf) should it happen to encounter an animal transiently infected with BVD and have I weighed up the risk accordingly?
 4. Is there any infectious disease in my area?
 5. Have any of the cattle I intend exhibiting been bought in recently and do I know their movement and health history?
 6. Have I reported any abortions in my herd, and have they been tested and cleared?
 7. Have I good biosecurity on my farm, including precautions for people and animals coming on to the premises, and boundaries that prevent contact between my livestock and neighbouring livestock?

If you are in any doubt, contact the staff of the local DAERA Direct Office who will be happy to discuss the matter and offer advice.

8. Animal Transport Rules

Farmers are reminded to comply with the animal transport rules which apply in all EU member states. Under the Northern Ireland Protocol, EU Council Regulation 1/2005 continues to apply within Northern Ireland. EU exit implications concerning welfare in transport can be accessed via the following link: <https://www.daera-ni.gov.uk/articles/transporter-authorisation-certificates-competence-vehicle-approval-and-journey-log-rules-1st-january>

Under Welfare of Animals (Transport) Regulations (Northern Ireland) 2006 and EU Council Regulation 1/2005 it is an offence to transport any animal in a way which causes, or is likely to cause, injury or unnecessary suffering to that animal. No animal shall be transported unless it is fit for the intended journey, for example pregnant females for whom 90 % or more of the expected gestation period has already passed are not considered fit to transport. Additional guidance on fitness to transport is available on <https://www.daera-ni.gov.uk/publications/fitness-transport-guidance-notes>

Additional rules apply where animals are being transported in connection with an economic activity.

The transport of animals to agricultural Shows is normally regarded as being connected to an economic activity however the following situations are exempt:

- **Journeys wholly within Northern Ireland consisting of a single animal accompanied by the owner or keeper (up to a limit of four animals/four people)**
- Where pet animals are taken to or from a specialist Show or competition, where the primary purpose is for pleasure or competition, not as part of a business;
- Where horses and ponies are transported by their owner for the purpose of riding or showing or competing for pleasure. (However, where a transporter is paid to undertake the transport this is within the scope of the EU Regulation);
- Where individuals attending Shows or competitions primarily for pleasure share the burden of transport, e.g. petrol costs, but there is no profit made by the individual carrying out the transport; and
- Where pet owners or hobbyists transport their own animals to and from events such as Shows, even when they win minor cash prizes. (In this context a hobbyist is an

animal breeder/keeper where the expenses of the hobby exceed any income generated by it).

Farmers who transport their own animals using their own vehicles on any journey less than 65km (40 miles) are also exempt from requiring a transporter authorisation. To note, the total journey is classed as the journey to and from the Show. Where this total journey exceeds 65km, this exemption no longer applies.

In any other circumstance the transport of horses and farmed livestock to and from Shows is subject to the additional rules. The transporter must hold a valid certificate of competence and valid transporter authorisation issued by their competent authority:

- DAERA in the north of Ireland
- DAFM in the south of Ireland
- DEFRA in Great Britain

Additional conditions, including prior vehicle approval, apply for any journey of more than 8 hours.

More information, including application forms, can be downloaded from the DAERA website at:

[Welfare of animals during transport | Department of Agriculture, Environment and Rural Affairs](#)

Alternatively, please telephone DAERA Animal Welfare Helpline on 0300 200 7840

9. Key Points

- Contact between animals at Shows poses risks to animal health.
- Exhibitors have a responsibility to protect the health of their own animals as well as those belonging to other exhibitors.
- Abortions in the exhibitor's herd must be reported, tested and cleared.
- BVD is now a Notifiable disease and anyone who suspects clinical infection must report this to DAERA. Show Secretaries are strongly advised to ask exhibitors for evidence of the BVD status of all cattle being exhibited to minimise the risk of disease spread at their Show.
- Farmers should assess the risks before taking animals to Shows; if in any doubt they should check with their local DAERA Direct Office that there are no herd or individual restrictions that would prevent a move to the Show.
- High standards of hygiene must be maintained with regard to vehicles, equipment, protective clothing and contact between animals.
- Exhibitors should be especially vigilant in monitoring the health of animals for some time after they return from Shows.
- Cattle and sheep from the ROI may only attend Show premises in NI that are operating as EU Approved Assembly Centres for the relevant species on that day.
- Exhibitors and Show operators should be aware of the risk of zoonotic disease - these are diseases that people can get through contact with animals. This can occur even when the animal appears healthy. Whilst under normal circumstances this should not be a problem, the stress of movement and mixing may lead to increased secretion of infective agents such as Campylobacter, E.coli O157, Tuberculosis, Brucellosis, Salmonella and Leptospira species. Show Operators should ensure that a Risk Assessment is carried out for each Show and that appropriate precautions are taken at all times especially where children, or immuno-compromised adults may come into contact with animals, their products and excreta.
- **In each of the above scenarios it is clear that full traceability is required for all animals exhibited at the Show. It is therefore essential that every animal is properly identified before admission to the Show; that all movement notification documents are completed fully and accurately and returned promptly to the Department; and that the Shows' own Flock and Herd Records are maintained in an up-to-date condition at all times.**

10. Summary of Show Operators' Responsibilities

Show Operators must ensure that all exhibitors comply with the:

- Identification and Movement of animal procedures in line with:
 - Cattle Identification (Notification of Births, Deaths and Movements) Regulations (Northern Ireland) 1999,
 - Cattle Identification (No. 2) Regulations (Northern Ireland) 1998,
 - Bovine Viral Diarrhoea Scheme Order (Northern Ireland) 2016 (for cattle born on or after 01/03/2016)
 - Sheep and Goats (Records, Identification and Movement) Order (Northern Ireland) 2009,
 - Pigs (Records, Identification and Movement) Order (Northern Ireland) 2012
- Procedure for the movement of cattle from and to the ROI
- Procedure for the movement of sheep and goats from and to the ROI
- Effective disease control measures
- Animal Health legislation
- Biosecurity measures
- Health and Safety procedures.
- Return of documentation to local DAERA Direct Office by next working day.

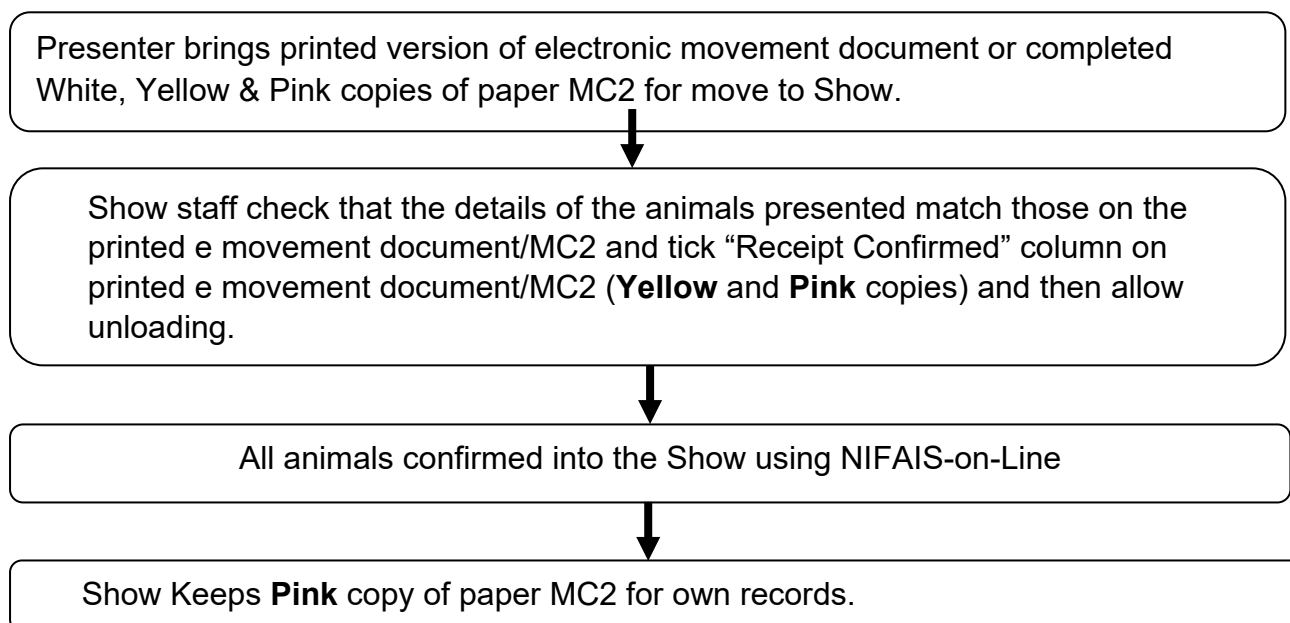
11. Summary of Exhibitors' Responsibilities

Show Exhibitors must comply with the:

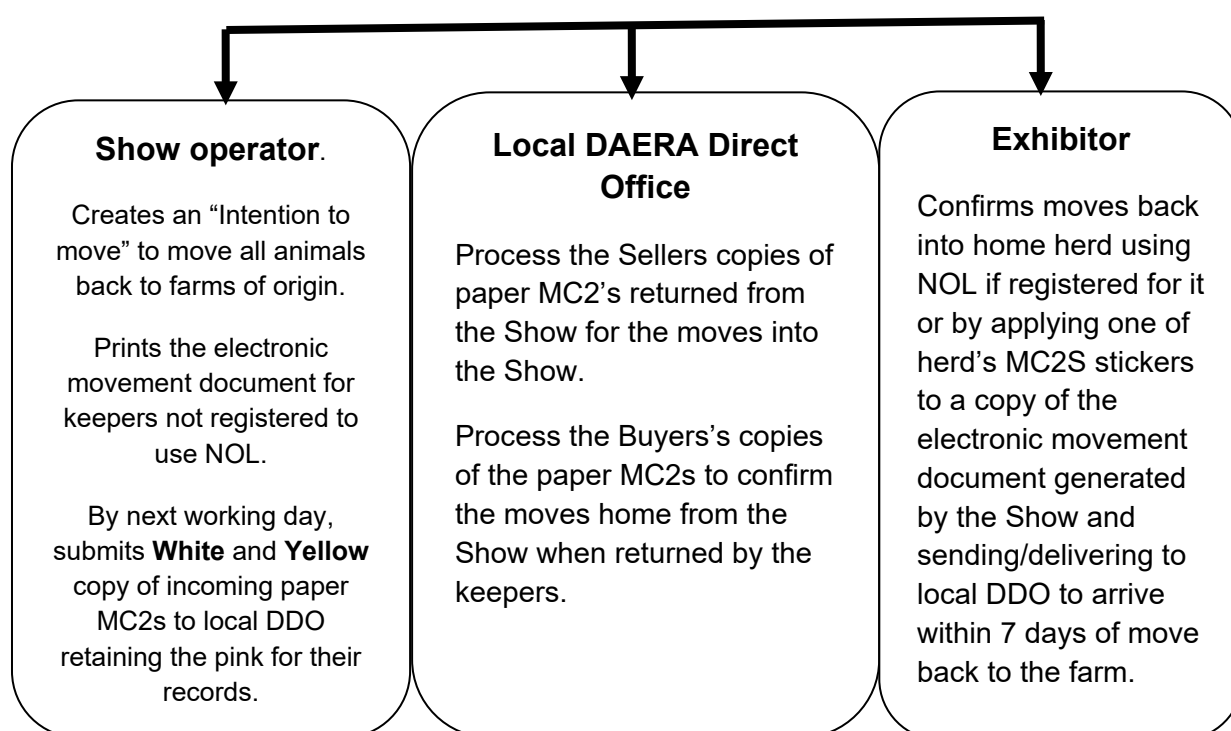
- Identification and Movement of animal procedures in line with:
 - Cattle Identification (Notification of Births, Deaths and Movements) Regulations (Northern Ireland) 1999,
 - Cattle Identification (No. 2) Regulations (Northern Ireland) 1998,
 - Bovine Viral Diarrhoea Scheme Order (Northern Ireland) 2016 (for cattle born on or after 01/03/2016)
 - Sheep and Goats (Records, Identification and Movement) Order (Northern Ireland) 2009,
 - Pigs (Records, Identification and Movement) Order (Northern Ireland) 2012
- Procedure for movement of cattle from and to the ROI
- Effective Disease Control
- Procedure for movement of sheep and goats from and to the ROI
- Biosecurity Measures
- Animal Health legislation
- Animal Transport Rules

Cattle Movements to and from Shows

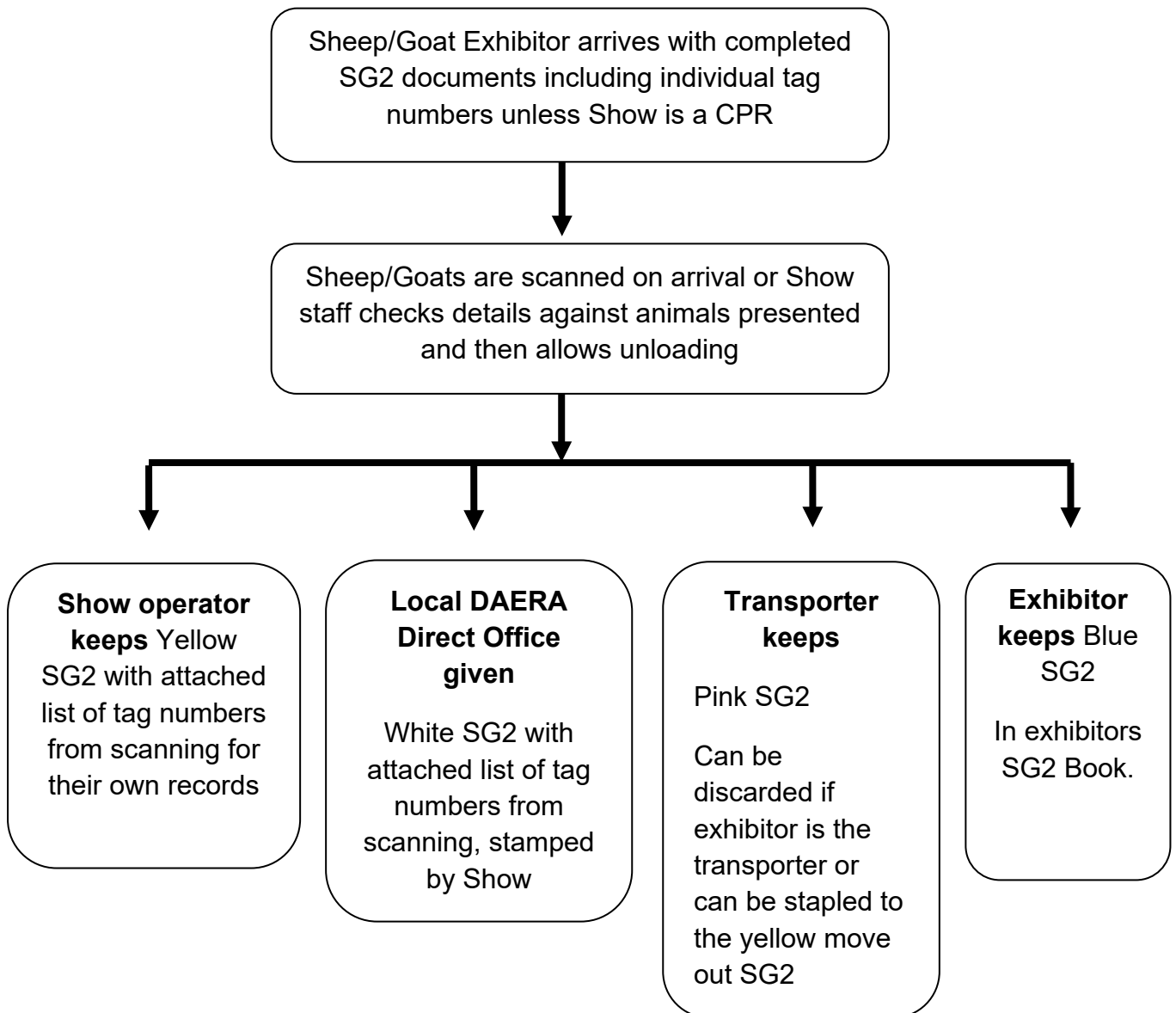
Move to the Show



Moves from Show back to Exhibitor's Herd



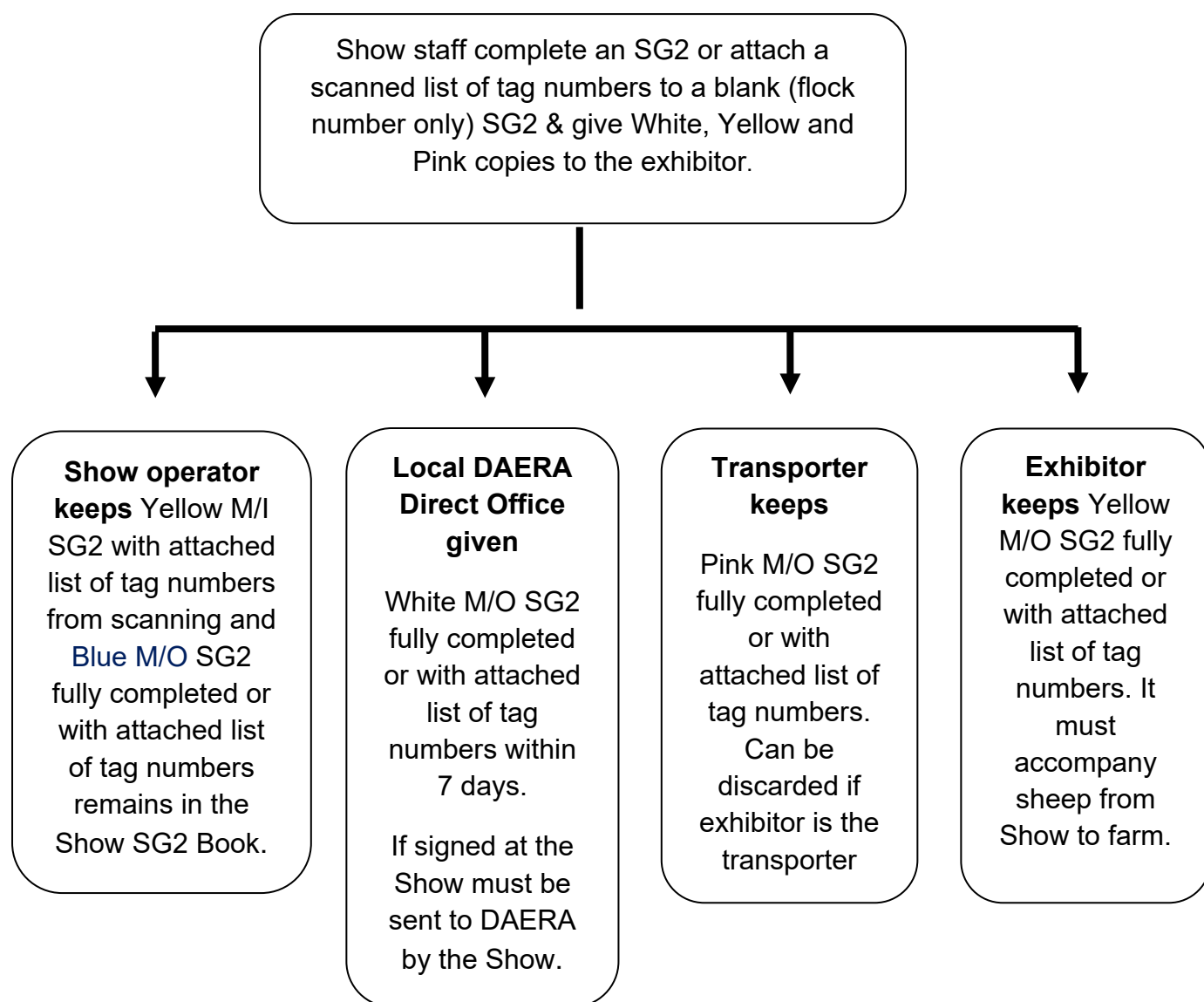
MC2 = paper cattle movement document

Sheep and Goat Movements to a Show

Key to abbreviations:

SG2 = sheep/goat movement document

Sheep and Goat Movements from Show

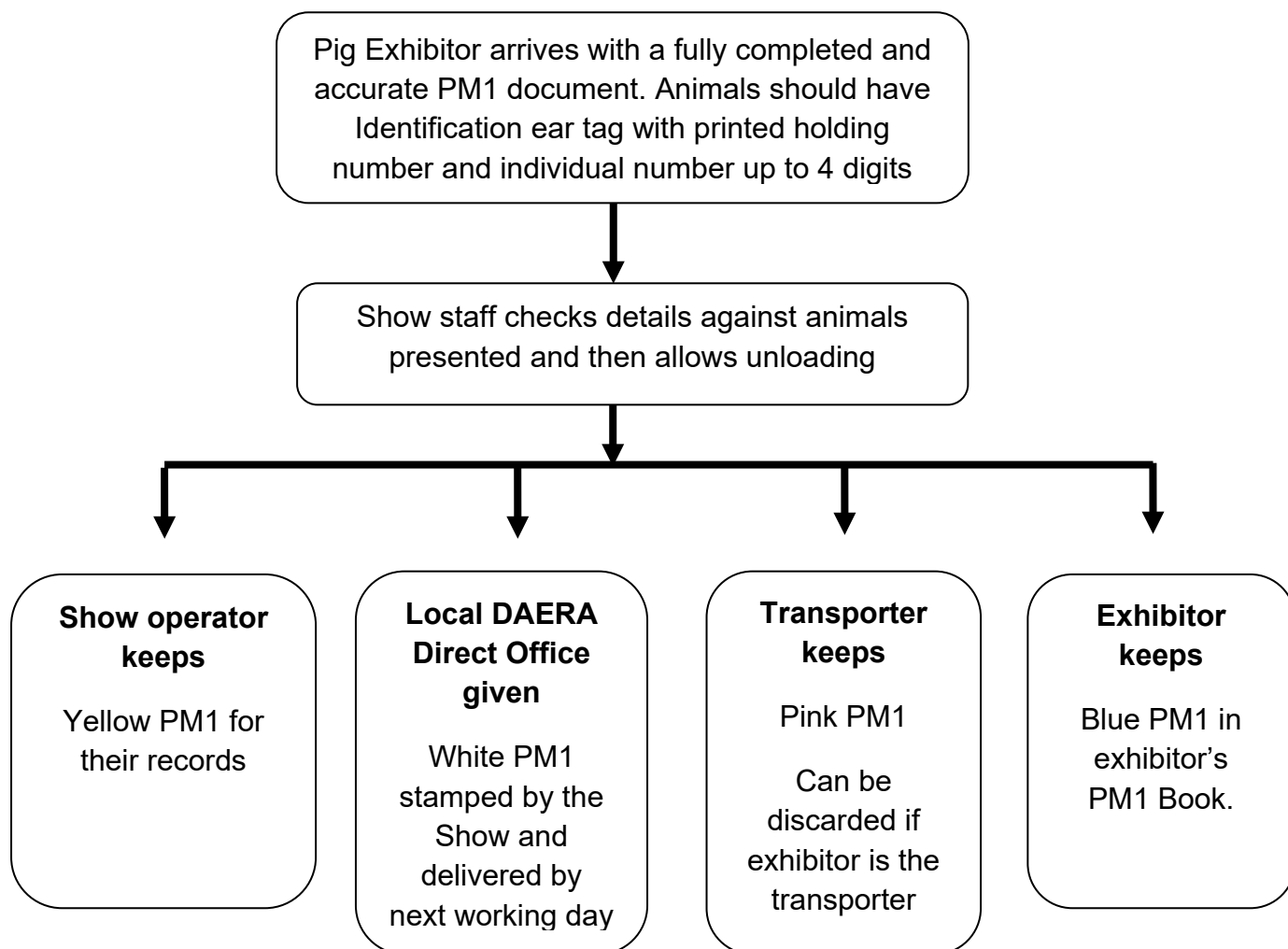


Key to abbreviations:

SG2 = sheep/goat movement document

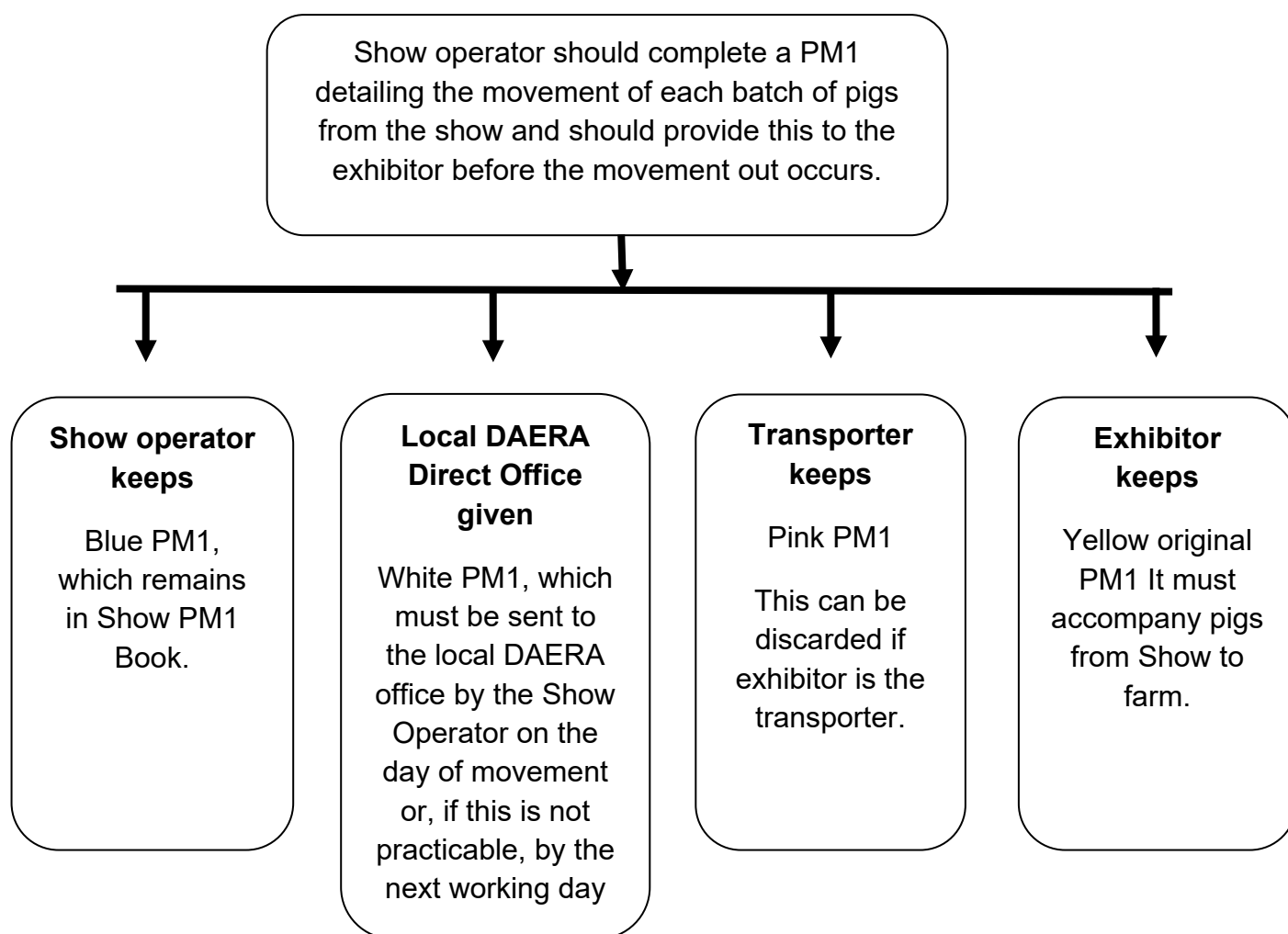
M/I = move in (to the Show)

M/O = move out (of the Show)

Pig Movements to a Show

Key to abbreviations:

PM1 = pig movement document

Pig Movements from a Show

Key to abbreviations:

PM1 = pig movement document

List of members and 2024 dates of their agricultural Shows (Correct at 1st February 2024)

Northern Ireland Shows Association (NISA)
Royal Ulster Agricultural Society
Eikon Exhibition Centre
Balmoral Park
Halftown Road
Lisburn
BT27 5RD

rhonda@ruas.org.uk

Telephone: 028 90 665225 Fax: 028 90 661264

Date	Show	Contact address & email
15 th to 18 th May 2024	Balmoral	Royal Ulster Agricultural Society Eikon Exhibition Centre Balmoral Park Halftown Road Lisburn BT27 5RD info@ruas.org.uk
31 st May & 1 st June 2024	Ballymoney	Show Secretary 282 Drones Road Dunloy Ballymena BT44 9DU secretary@ballymoneyshow.org
1 st June 2024	Lurgan	Show Secretary 4 Reaskcor Road Dungannon BT70 3NZ info@lurganshow.co.uk
8 th June 2024	Armagh County	Armagh County Show Office Units 2 & 3 Armagh Business Centre 2 Loughgall Road Armagh BT61 7NH info@armaghshow.com
15 th June 2024	Saintfield Show	Show Secretary Glenbrook Farm 7 Lough Road Lisburn BT27 6US secretary@saintfeldshow.co.uk

15 th June 2024	Ballymena	Show Secretary Ballymena Showgrounds Warden Street Ballymena BT43 7DR secretary@ballymenashow.co.uk
22 nd June 2024	Killyleagh	Show Secretary Coiley Hill Road Killyleagh Downpatrick killyleaghshow@hotmail.com
29 th June 2024	Newry	Show Secretary 21 Searce Lane Jerrettspass Newry BT36 6LY newryshow@hotmail.co.uk
5 th & 6 th July 2024	Omagh	Tyrone Farming Society The Showgrounds 3 Gillygooley Road Omagh BT78 5PN info@tyronefarmingsociety.co.uk
13 th July 2024	Castlewellan	Show Secretary 51 Demesne Road Ballynahinch BT24 8NS castlewellanshow@aol.com
20 th July 2024	Londonderry & Limavady	Show Secretary 97 Carrowclare Road Limavady BT49 9EB jen453@btinternet.com
27 th July 2024	Antrim	Show Secretary 13 Arindale Maghaberry Moir Craigavon BT67 0SY secretary@antrimshow.com
31 st July 2024	Clogher Valley	Clogher Valley Agricultural Society HQ 27 Main Street

		<p>Augher BT77 OBD</p> <p>cloghershow27@hotmail.com</p>
26 th November 2024	RUAS Beef & Lamb	<p>Royal Ulster Agricultural Society Eikon Exhibition Centre Balmoral Park Halftown Road Lisburn BT27 5RD</p> <p>info@ruas.org.uk</p>
12 th December 2024	RUAS Winter Fair	<p>Royal Ulster Agricultural Society Eikon Exhibition Centre Balmoral Park Halftown Road Lisburn BT27 5RD</p> <p>info@ruas.org.uk</p>